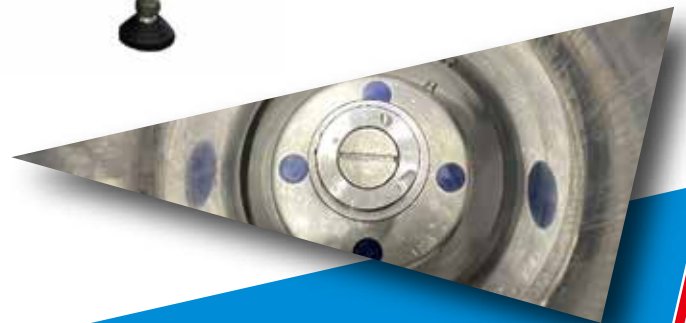


Solutions for today, Innovations for tomorrow.

PRESSURE CONTROL MACHINE

**EQ-6V**  
**EQ-12V**



**HITEC**

[www.hitec-jp.com](http://www.hitec-jp.com)

**By keeping the pressure constant in the piping between the material pump and the stuffing machine, variations in filling weight can be minimized.**

## PRESSURE CONTROL MACHINE

**EQ-6V**

**EQ-12V**

The Pressure Control Unit uses air pressure to maintain constant pressure in the piping between the pump and the stuffing machine, ensuring a stable supply of material to the stuffing machine.

Excess material from the pump is sent into the pressure control cylinder. When the cylinder is full, the pump stops, and the material is discharged into the piping at a constant pressure. This feature eliminates the need to synchronize the speeds between the stuffing machine and the pump for each product. Additionally, by minimizing the effects of pressure shortages during pump motor startup, speed changes, and pressure fluctuations during filling speed adjustments, stable material supply to multiple stuffing machines is achievable.



### ▶ The pressure fluctuation range is within $\pm 0.02$ MPa.

By absorbing the pulsation of the pump, pressure stability is maintained in the piping, reducing variations in sausage weight.

### ▶ Minimal damage to the material.

The cylinder is pressurized with air, and material movement is limited to vertical motion only, preventing temperature rise and minimizing damage to the material.

### ▶ Easy operation

Simply set the operating air pressure—no complicated operation required.

### ▶ Others

We also offer horizontal types and 12-liter cylinder types. Please feel free to contact us for more information.

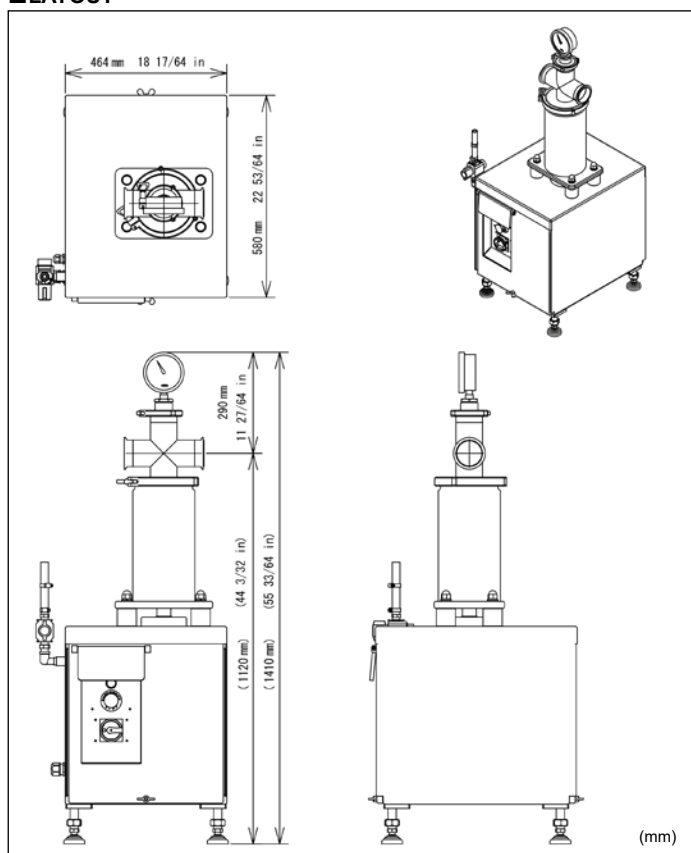


### ▶ Easy to clean and hygienic.

The piston inside the cylinder can be easily detached, allowing for thorough cleaning of all areas where material passes through. A drain outlet is also provided for added hygiene.



## ■ LAYOUT



## ■ SPECIFICATION

	EQ-6V	EQ-12V
Height	1410~1560 mm (55 33/64 in - 61 27/64 in)	1560 mm (61 27/64 in)
Height of pipe connection	1120~1270 mm (44 3/32 in - 50 in)	1270 mm (50 in)
Depth	580 mm (22 53/64 in)	630 mm (24 51/64 in)
Width	464 mm (18 17/64 in)	514 mm (8 27/64 in)
Weight	200 kg (440 lbs)	250 kg (551 lbs)
Cylinder capacity	6 liter (1.5 gal)	12 liter (2.9 gal)
Range of pressure adjustment	0 ~ 0.6 Mpa (0~87 psi)	
Cylinder diameter	160 mm (6 19/64 in)	200 mm (7 7/8 in)
Stroke	300 mm (11 13/16 in)	380 mm (14 61/64 in)
Connection pipe size	3S (Diameter 76.3 mm / 3 in)	
Compressed Air	0.65 Mpa (94.25 psi)	
Controllable flow rate at constant pressure	0~2,200 liter per min (0 to 537 gal per min)	0~3,300 liter per min (0 to 805 gal per min)
Accuracy of constant pressure	within $\pm 0.02$ Mpa	
Consumption air volume (MAX)	485 liter per min (118 gal per min)	720 liter per min (175 gal per min)
Power requirements	11 W	

※ We can also manufacture products according to specifications other than those listed above.  
 ※ Specifications and equipment are subject to change without any obligation of the part of the manufacturer.  
 ※ Connection pipes are optional.

HITEC CO., LTD.  
 HEAD OFFICE & FACTORY  
 2565-8, NAGATSUTA-CHO, MIDORI-KU, YOKOHAMA 226-0026, JAPAN  
 PHONE +81-45-983-5000 FAX +81-45-983-0020  
 E-mail : sales@hitec-jp.com  
 URL : www.hitec-jp.com

HITEC CO., LTD.